



INTERNATIONAL WATER RESOURCES ASSOCIATION'S  
1<sup>st</sup> ISLANDS WATER CONGRESS  
FAROE ISLANDS - SEPTEMBER 4-6, 2024



*International  
Water Resources  
Association*



JARÐFEINGI  
Faroese Geological Survey

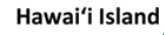
# Wai Governance and the Ancestral Circular Economy

Pua Souza

University of Hawai'i at Mānoa  
Pō'ai ke Aloha 'Āina Research Lab



UNIVERSITY  
of HAWAII  
MĀNOA





# Content

- Wai, Waiwai, Kālai'āina and Makahiki
- Hawaiian Ancestral Circular Economy
- Applying Ancestral knowledge and structures to answer contemporary water challenges

## WAI

*water, freshwater*

## WAIWAI

*“water water”, wealth, abundance*

- A wealthy place was one that has access to water resources, a wealthy person was someone who could feed and provide for those around them
- Wealth was not an economic quantum, but a social ideal (Kanahēle, 1986)

## **KĀLAI'ĀINA**

*kālai - to carve or divide*

*'āina - land, earth*

*kālai'āina - to divide the land*

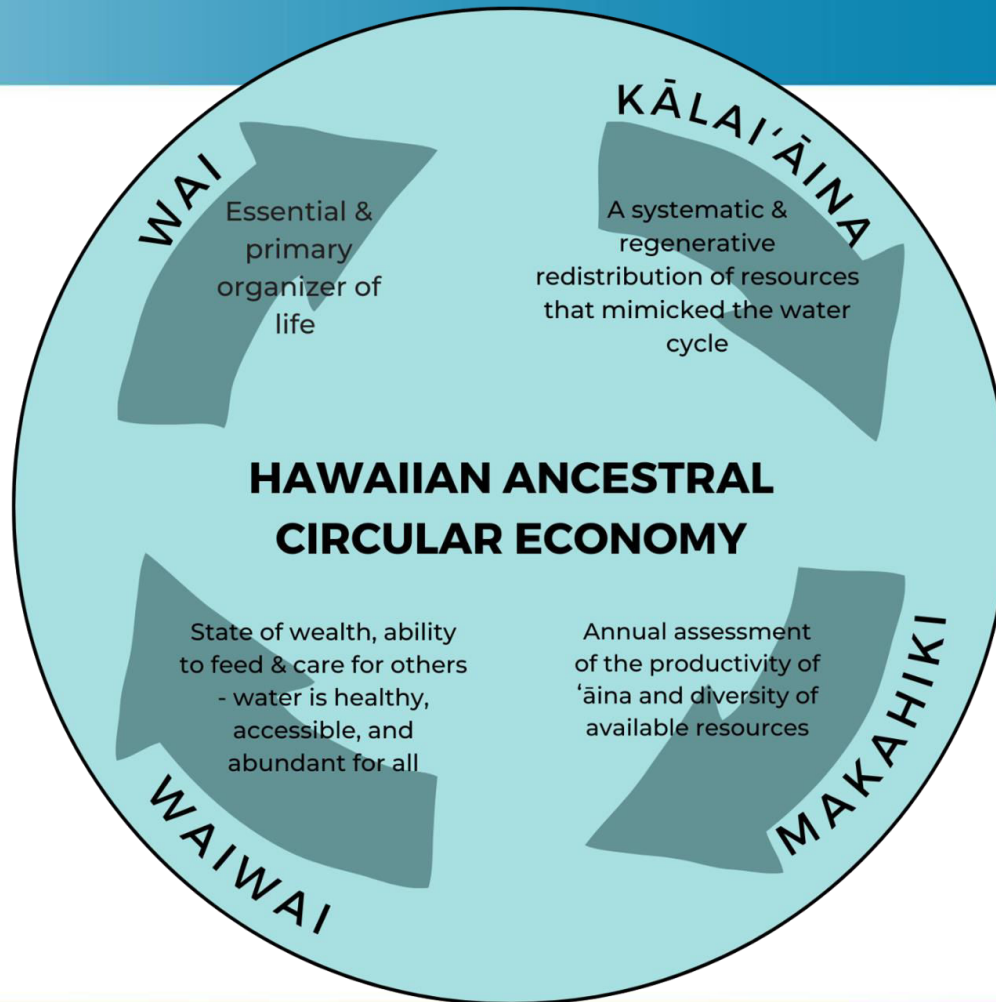
- The Kālai'āina - process of governance and land redistribution that mimicked circular and regenerative aspects of the water cycle
- Goal was to create a systematic redistribution of resources to achieve balance and productivity between the chiefs/leaders, 'āina, and all others.

## MAKAHIKI

*annual period of renewal, celebration,  
and ceremony as related to the season of  
the god Lono during winter months*

- Chiefs and their court traveled across the island in processions, stopping in different districts for Makahiki ceremonies
  - These processions were strategic, as they allowed chiefs to re-establish relationships with people and better understand what was required of them as leaders.
  - Annual review of the productivity of 'āina and the diversity of resources available across districts.





01

Relationship building

02

Balanced governance structures

03

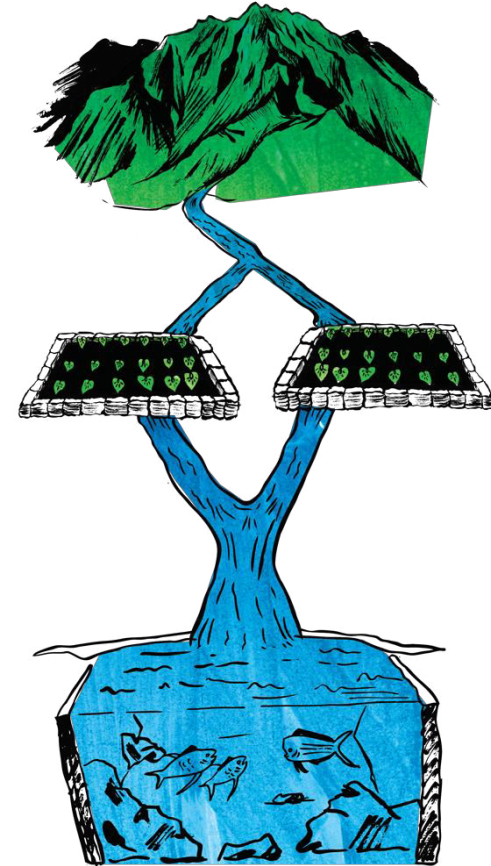
Systematic and regular redistributions  
of wealth & power

04

Promoting regenerative socio-  
ecological processes

05

Environmental kinship





## MAUI WATER SHORTAGE

PROHIBITED FOR UPCOUNTRY RESIDENTS (\$500 FINE EACH):

WASHING VEHICLES  
WATERING LAWNS  
IRRIGATION  
OTHER NONESSENTIAL ACTIVITIES

MAUI NOW

### STAGE 1 WATER SHORTAGE DECLARED

10% Reduced Usage Ordered for Wailuku, Kahului & Pā'ia

HAWAII  
NEWS NOW

Live News Maui Wildfires Weather Sunrise Sports Podcasts HI Now Daily

## Study: Nearly half of Hawaii families with children are experiencing food insecurity

PRICED OUT OF PARADISE

## HOME PRICES HIT RECORD HIGH IN HAWAII

MEDIAN PRICE ON OAHU HIT \$920,000

## Navy Confirms Petroleum Was Detected In The Red Hill Well

The state Department of Health said it had just received the Navy's test results and it stood by its recommendations on water usage.



HAWAII  
NEWS NOW

Live News Maui Wildfires Weather Sunrise Sports Podcasts HI Now Daily

Coastal Flood Statement Is In Effect

## Lawsuit: Red Hill families drank 'antifreeze' in fuel-contaminated water

HAWAII NEWS

## Hawaii's overtourism may get worse than ever

By Lebawit Lily Girma Bloomberg News - May 6, 2023







How might re-learning the role of wai in processes like Kālai'āina carve a different path for Hawai'i's future economy?

What might a contemporary Ancestral Circular Economy look like?

What would it mean for our systems to embody a state of waiwai?

