



**Scottish
Water**



**The Scottish
Government**
Riaghaltas na h-Alba

**Trusted partners
in the global
water community**

Service, Quality and Environment: Building a sustainable service

Dr Mark Williams
Head of Environmental Science and Regulation



**Scottish
Water**

Trusted to serve Scotland

Water quality and water resources challenges

78 failing wastewater works

Bathing Waters performance poor

Pollution Incidents

Flooding risks to customers



**Scottish
Water**

Trusted to serve Scotland

Delivering Services

Achieving quality standards
Investing in assets (£6bn over 11 years)



...All require resources and emit carbon:

- **Power**
- **Chemicals**
- **Pounds**



**Scottish
Water**

Trusted to serve Scotland

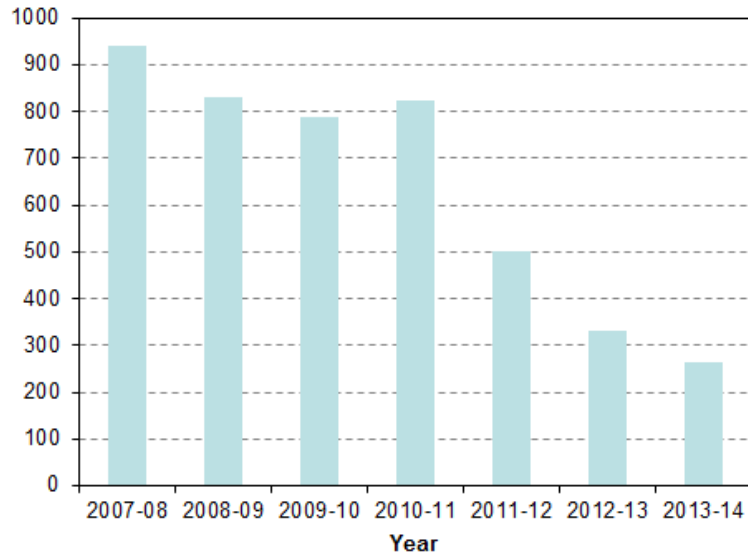
2013 – 14 : Major Quality Issues Addressed

Best ever drinking water quality

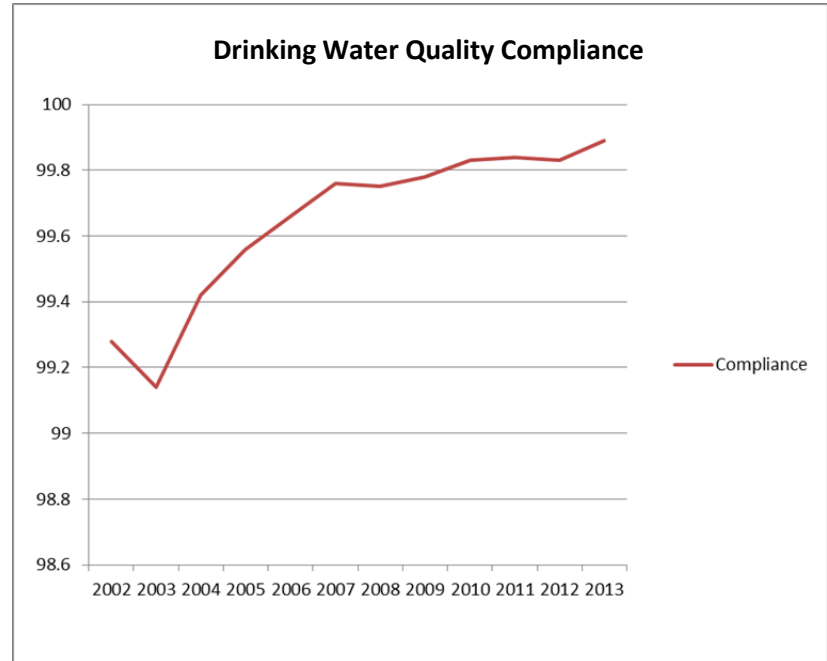
Environmental enhancement

Improved environmental and asset knowledge

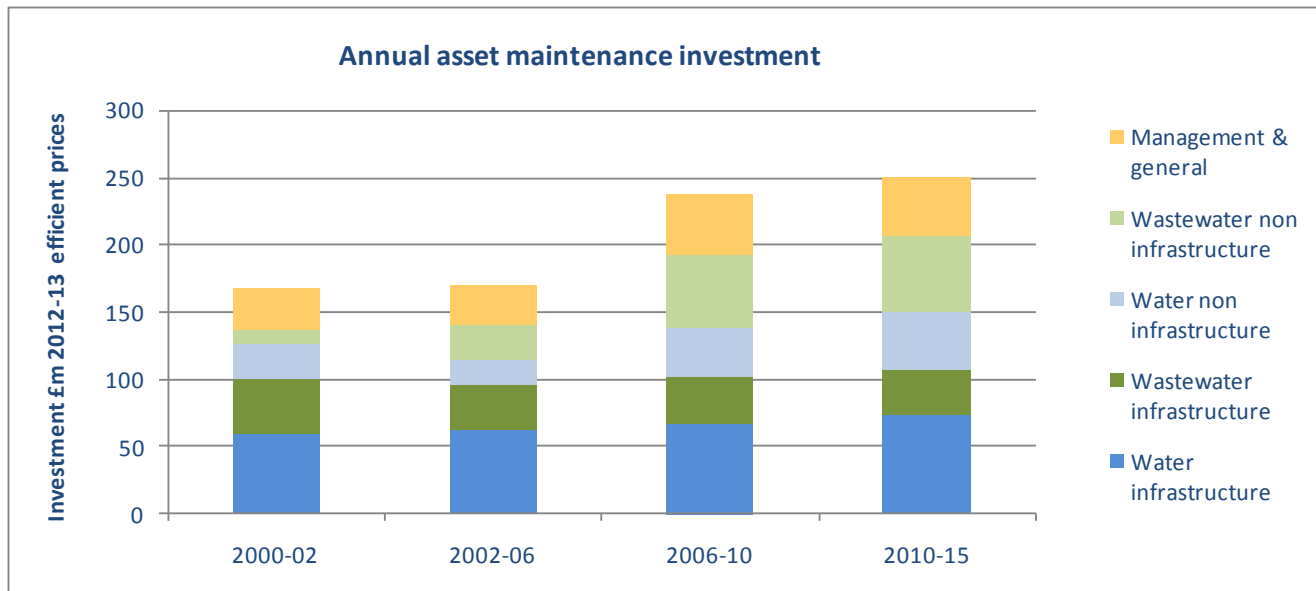
Wastewater pollution incidents



Drinking Water Quality Compliance



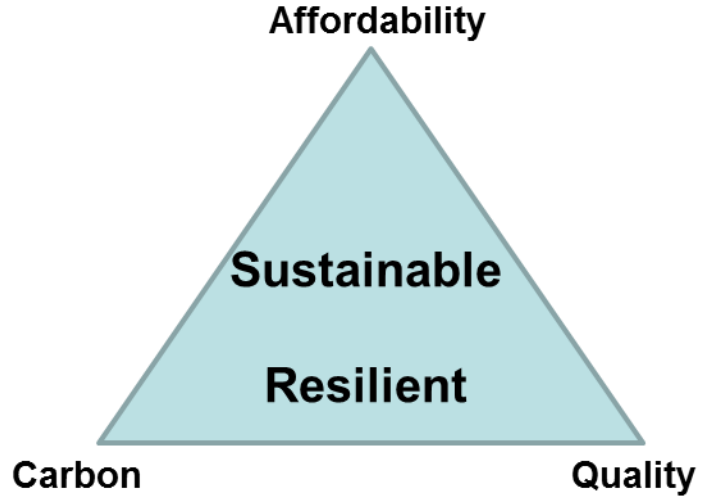
But enhancement has a legacy



**Scottish
Water**

Trusted to serve Scotland

Challenges



**Scottish
Water**

Trusted to serve Scotland



Morning 30th July 2002 River Clyde at Glasgow Green

On 30 July 2002 Glasgow's average monthly rainfall fell in just 10 hours. This led to significant flooding across the city as the sewerage and drainage systems struggled to cope with the extreme weather conditions.



**Scottish
Water**

Trusted to serve Scotland

Customer and environmental impacts



**Scottish
Water**

Trusted to serve Scotland

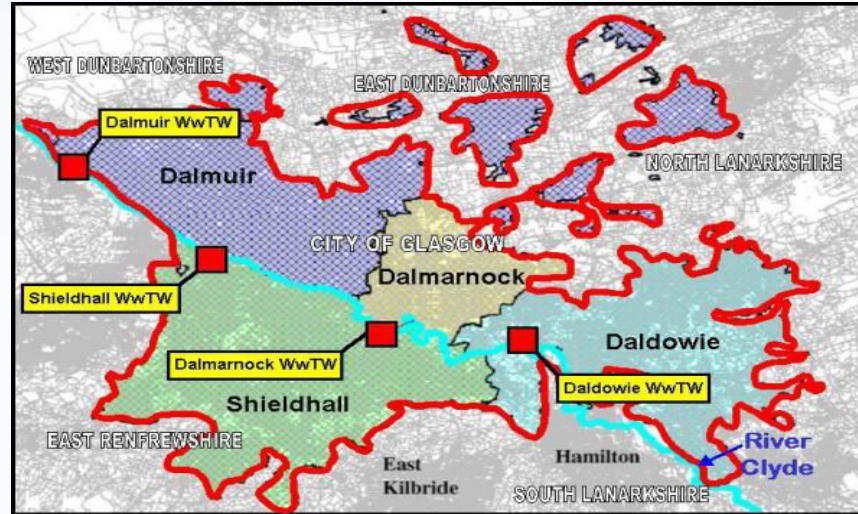


The Metropolitan
Glasgow Strategic
Drainage Partnership

MGSDP Partnership



GLASGOW and
the CLYDE VALLEY
strategic development
planning authority



Scottish
Canals



*Partnership through
Collaboration*

Hard engineering to Surface Water Management



Large diameter tunnels



GCC Flood Prevention Scheme - Ruchill



**Scottish
Water**

Trusted to serve Scotland

Carbon Strategy

“We will always act responsibly to proactively manage and reduce carbon in our operations and capital investment, and to meet the expectations of the Climate Change (Scotland) Act.”

Reduce carbon across all areas of our business

Reduce ‘demand’

**Cost effective energy
efficiency**

**Cost effective
renewables**

**Investment: ‘whole life
carbon’**



**Scottish
Water**

Trusted to serve Scotland

Sustainable approaches to drinking water quality



Sustainable Land Management Incentive Scheme

Financing Measures for the Protection of Drinking Water Sources
Information Booklet



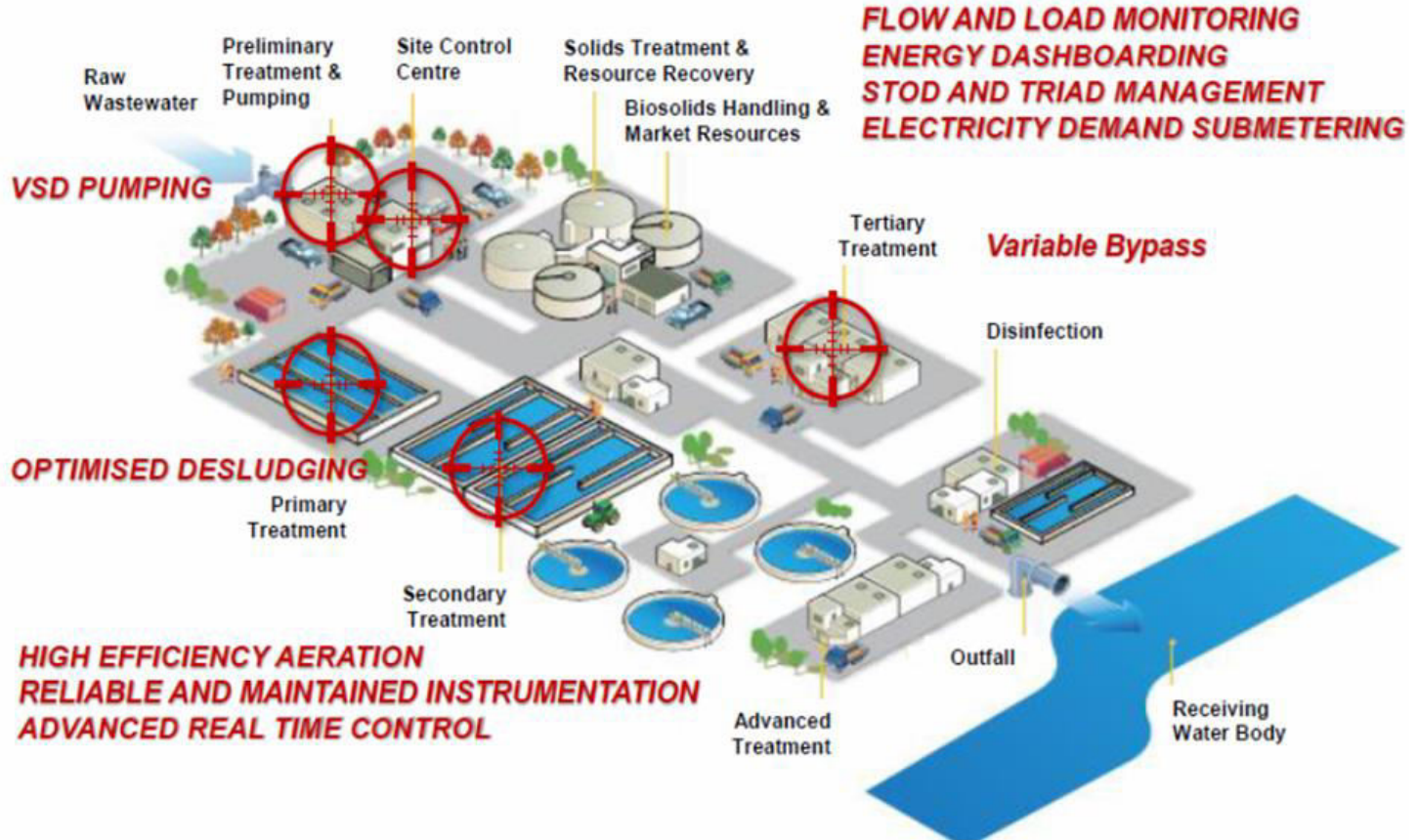
The 'ideal' – resilient, natural watercourses



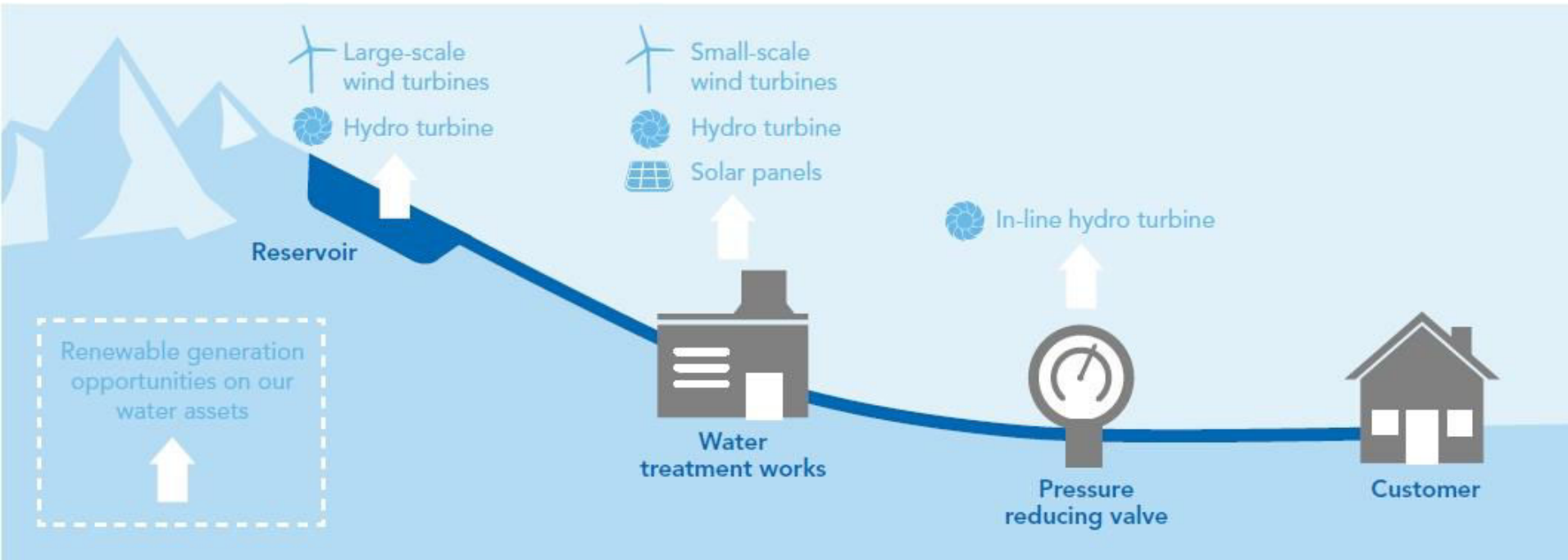
**Scottish
Water**

Trusted to serve Scotland

Energy Efficiency

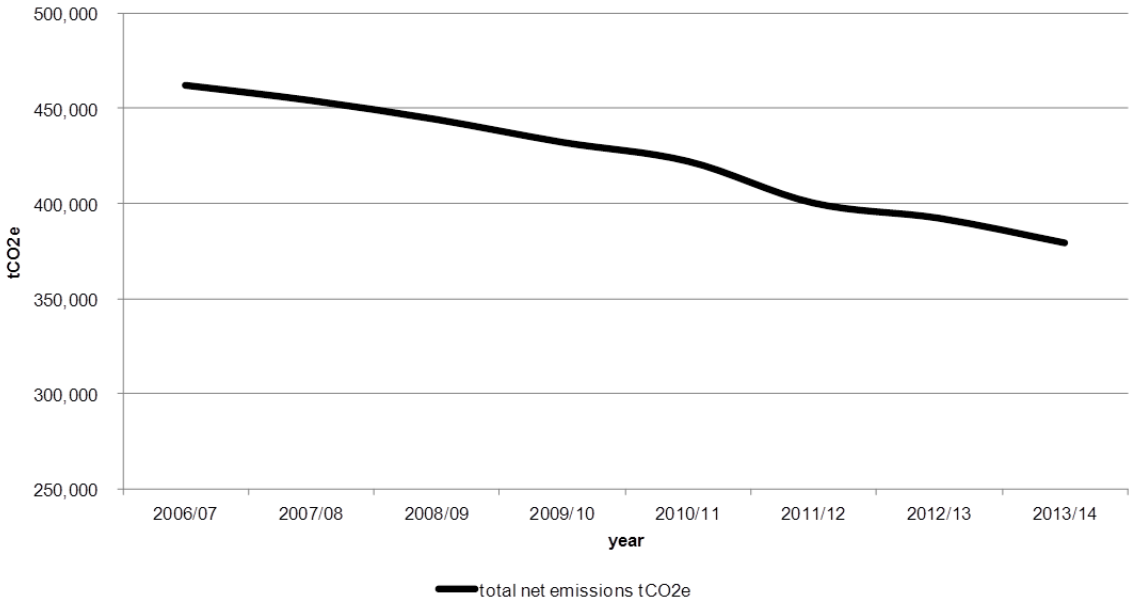


Renewables



Carbon performance to date

Annual carbon footprint tCO2e



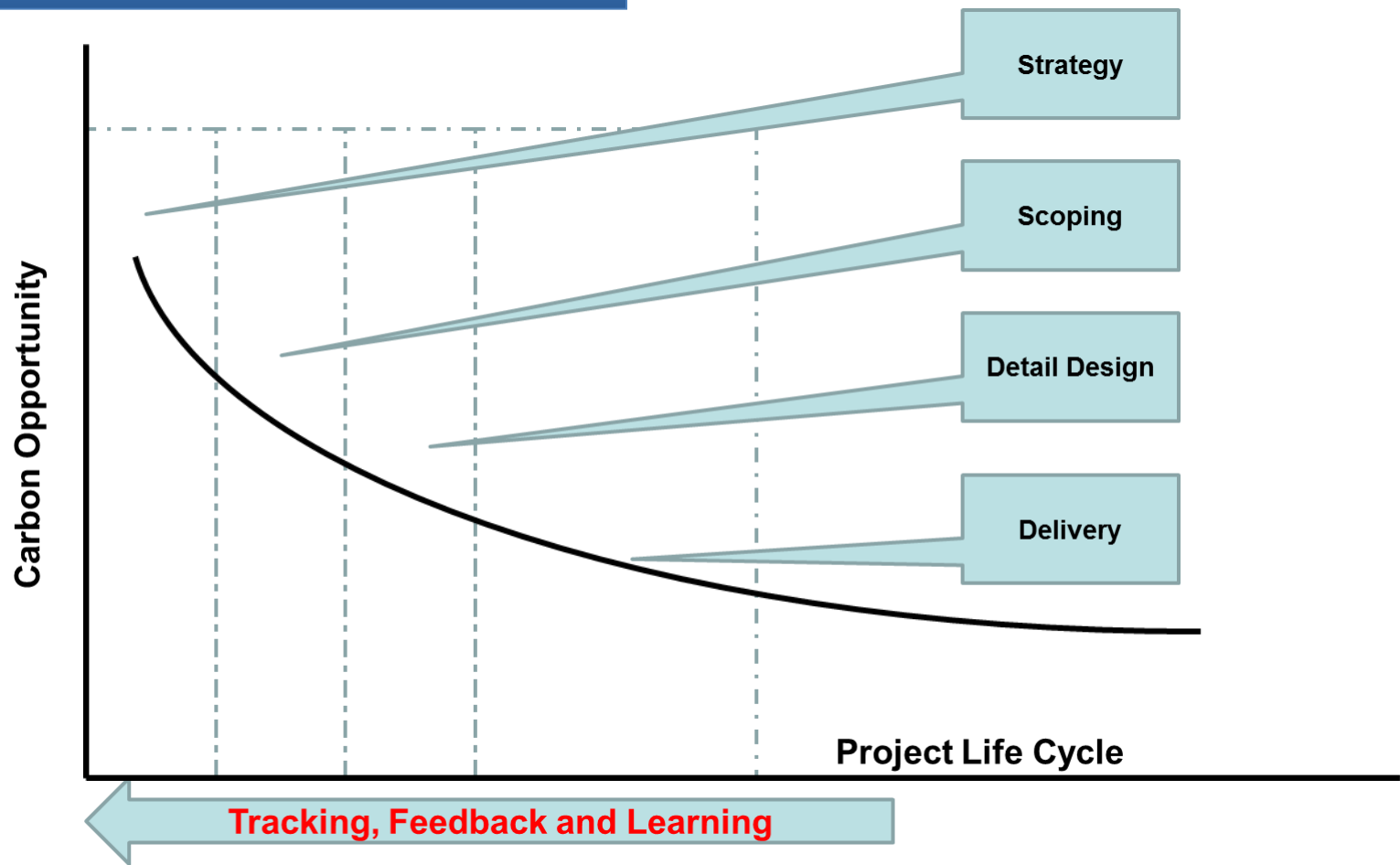
Leakage Efficiency
vs
Enhancement
Renewables



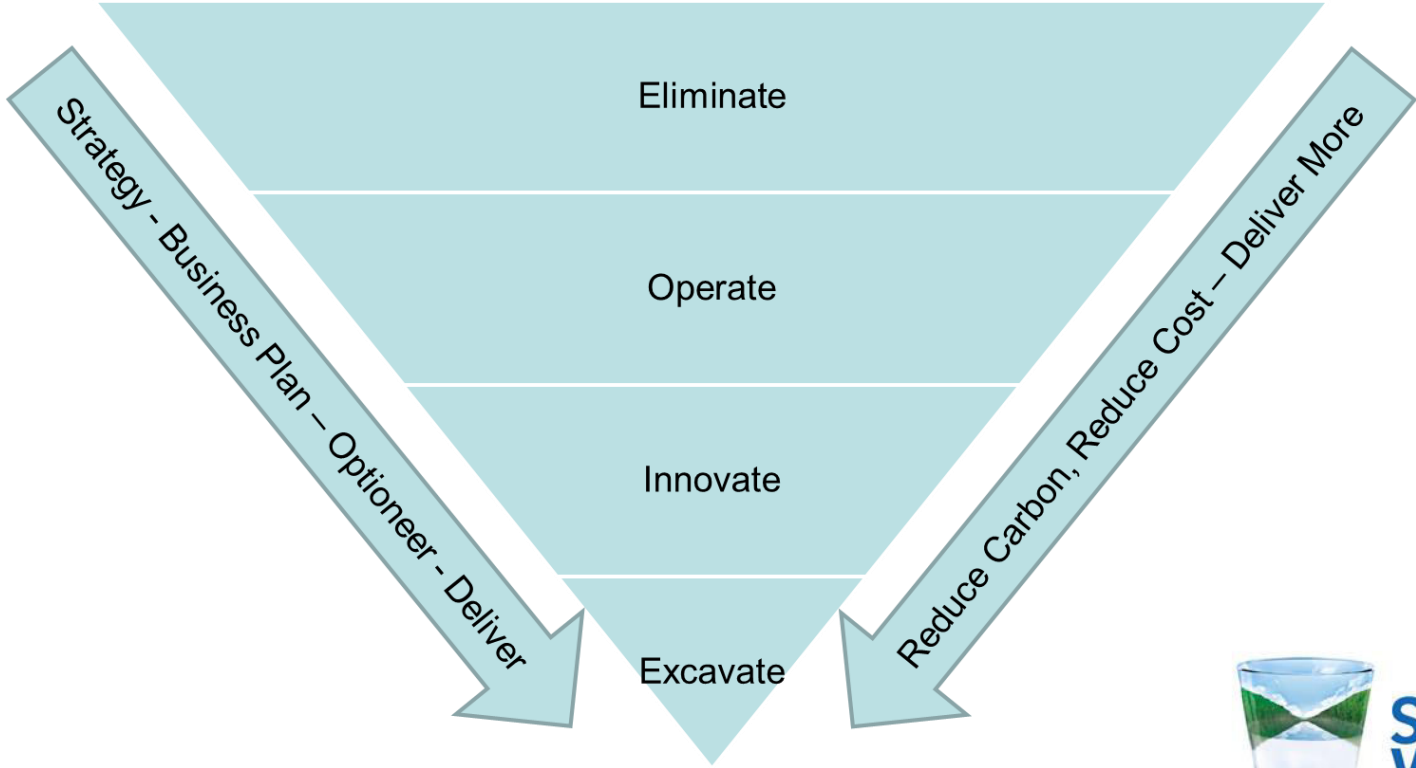
Scottish
Water

Trusted to serve Scotland

Investment Carbon – ‘Value Curve’



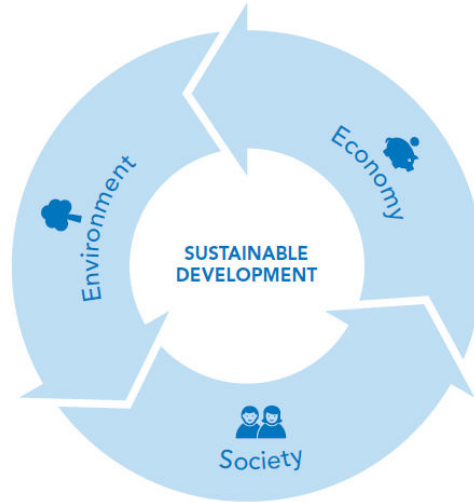
Making the right investment choices



**Scottish
Water**

Trusted to serve Scotland

A sustainable society





**Scottish
Water**



**The Scottish
Government**
Riaghaltas na h-Alba

**Trusted partners
in the global
water community**

Thank You



**Scottish
Water**

Trusted to serve Scotland