

Down the river – out to sea... and in
some cases back again



The Scottish
Government
Riaghaltas na h-Alba

Prof Colin Moffat

marinescotland
science

Our Vision



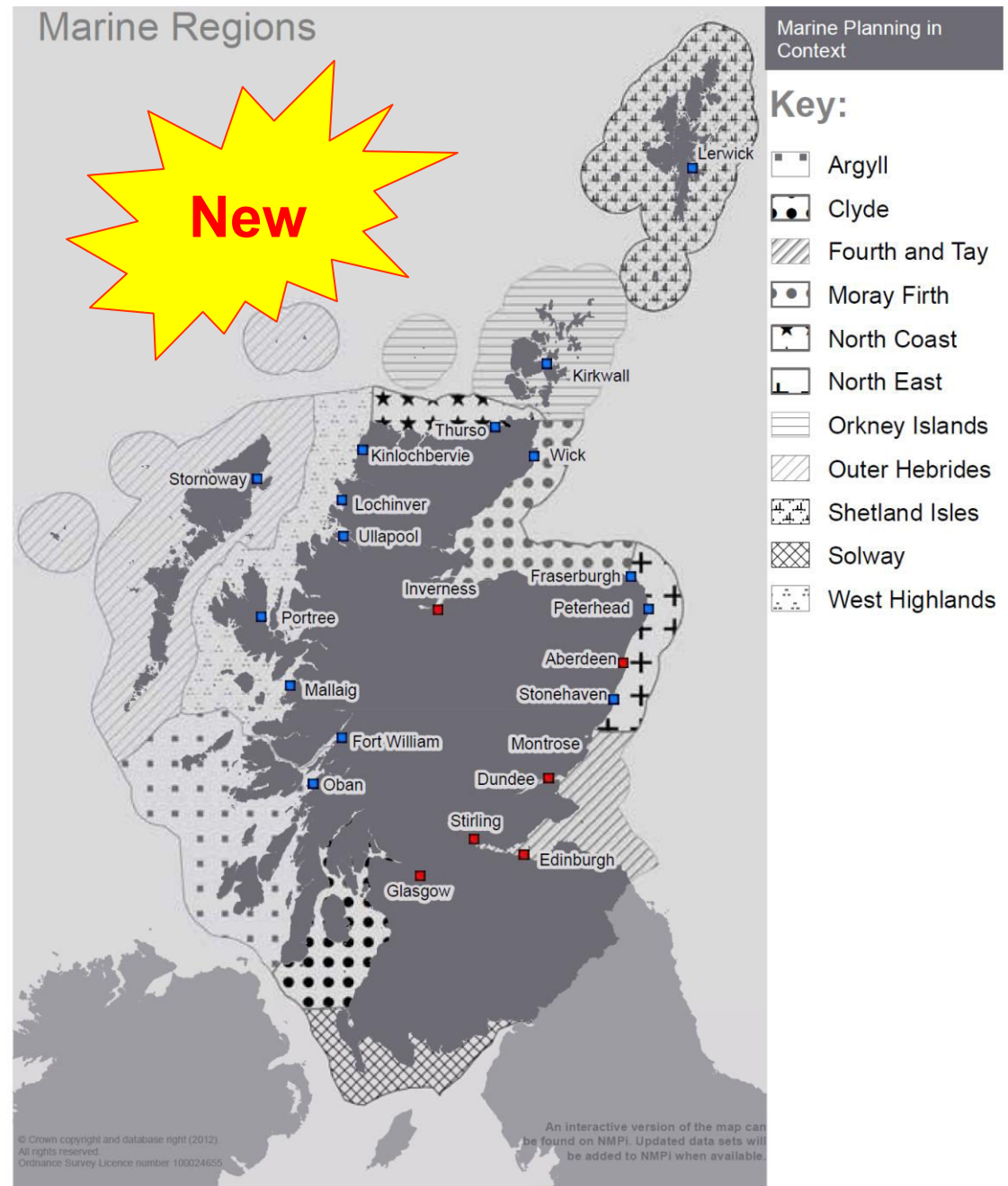
marinescotland
science

'clean, healthy, safe, productive, biologically diverse marine and coastal environments, managed to meet the long-term needs of people and nature'



National Marine Plan 2015

Scottish Marine Regions: Draft Boundaries

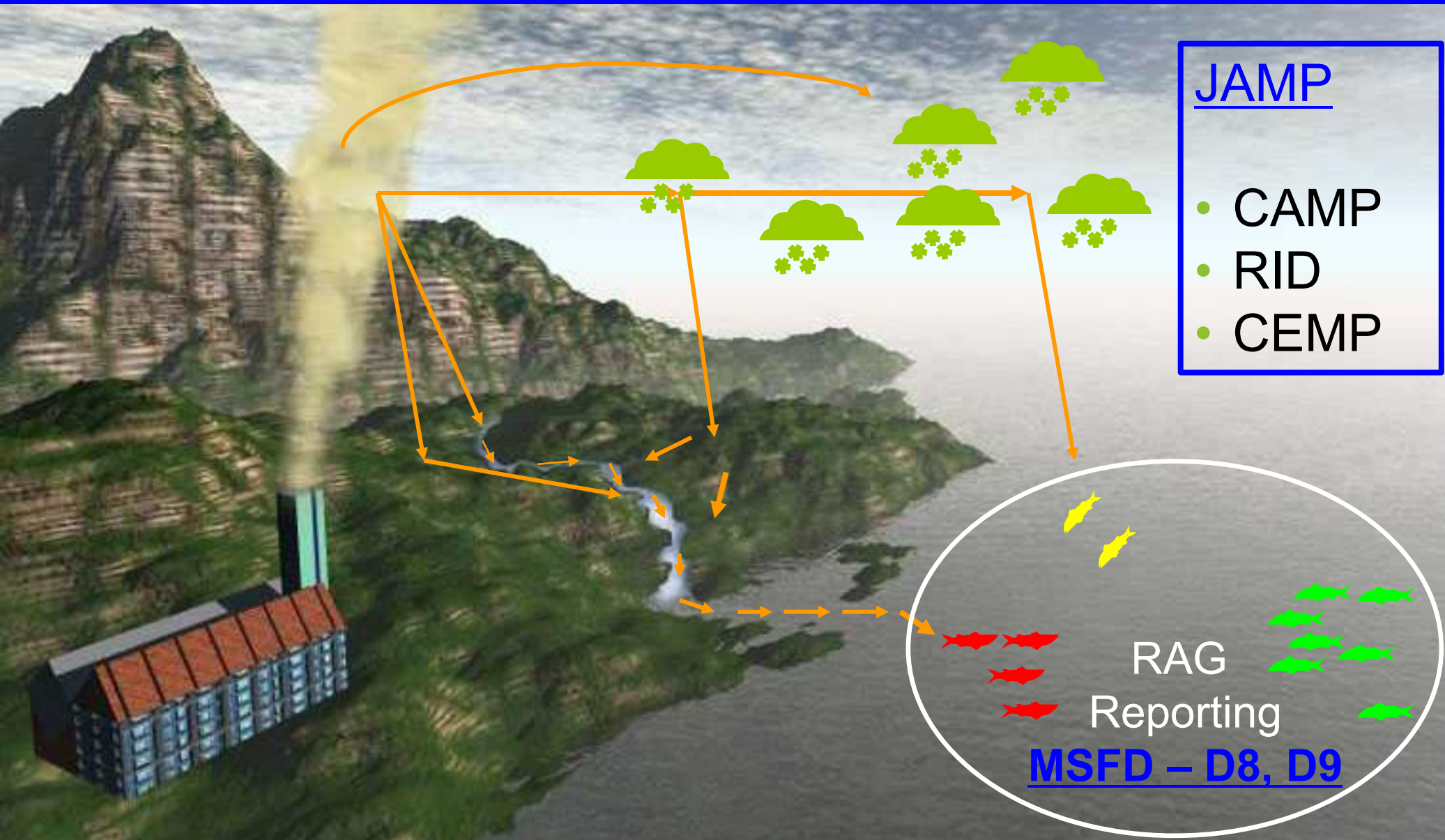


Thinking Widely



marinescotland
science

Holistic assessments: **inputs** – **concentrations** – **effects**



Assessing Human Impact

Main - Microsoft Internet Explorer EN English (United Kingdom) Microphone Tools

http://www.bodc.ac.uk/projects/uk/merman/assessments_and_data_access/csemp/

File Edit View Favorites Tools Help

Main

CSEMP assessment using data extracted from MERMAN on 31 July 2012

biota
Chlorobiphenyls
CB118
Go to national area
Clyde


Station information
Name : Irvine Bay
Code : Clyde_IrvineBay_fi02
Longitude : -4.788
Latitude : 55.586
Agency : Marine Scotland
Species : Pleuronectes platessa

Further station information
contact : Marie Russell
Marie.Russell@scotland.gsi.gov.uk

Access to data

Status (colour)
● below BAC ● below EAC
● above EAC

Trend (shape)
▼ downward trend ▲ upward trend
● no trend ● status assessment only
○ informal status assessment



OSPAR COMMISSION HSS

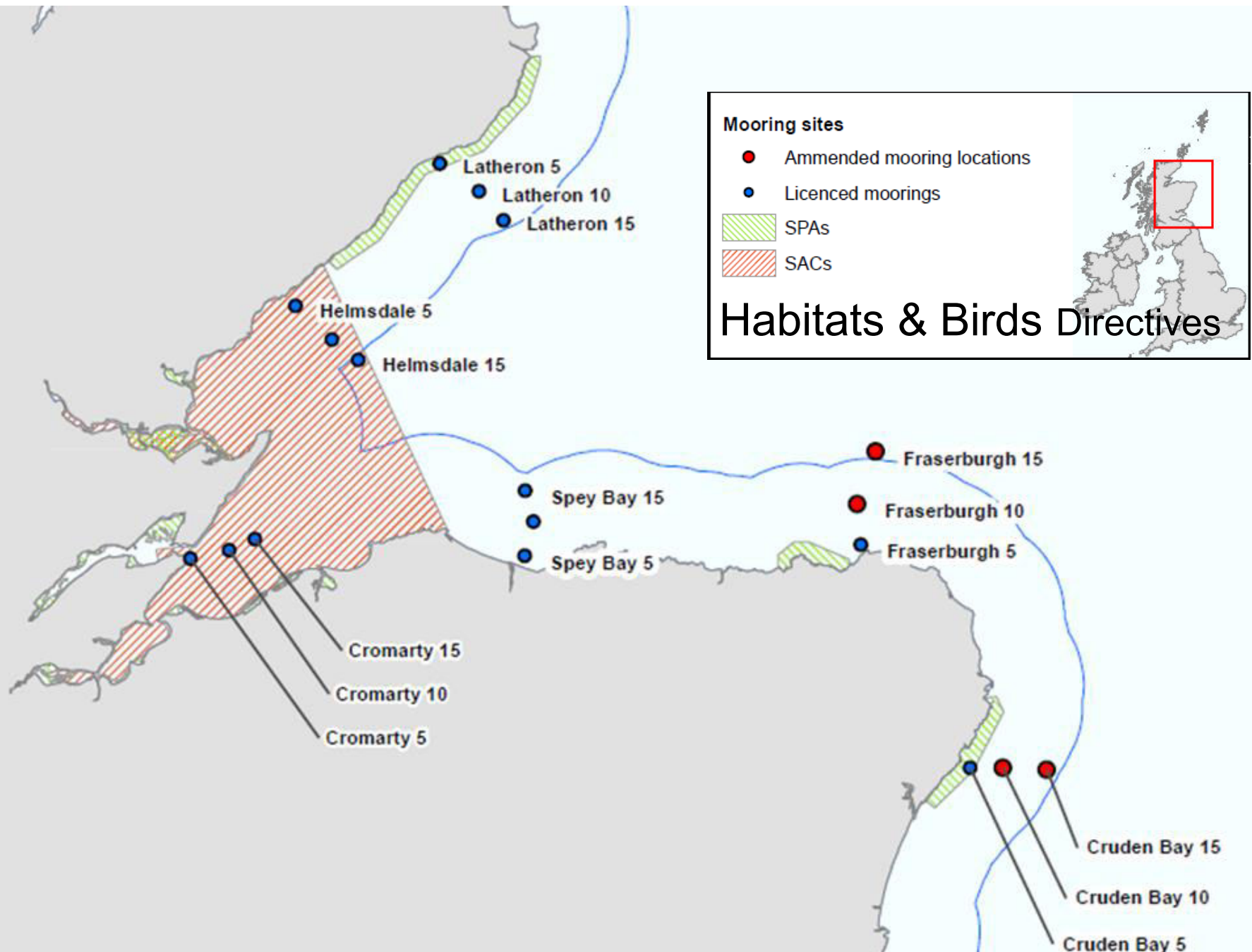
MSFD – D8, D9

CB 118 in Biota

More information ...
assessment methodology
assessment criteria

Internet 100%

Site Protection – EU Directives

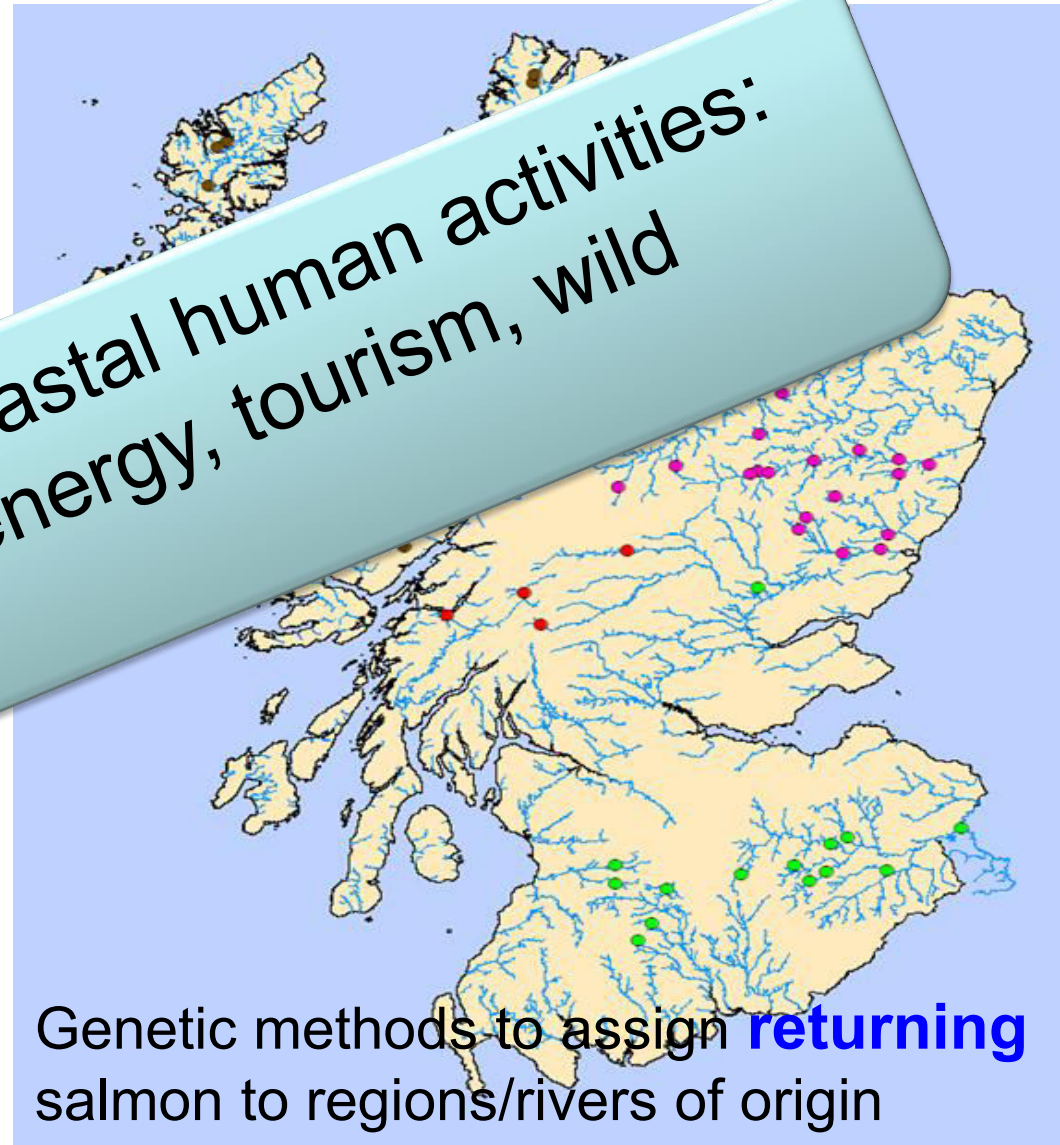
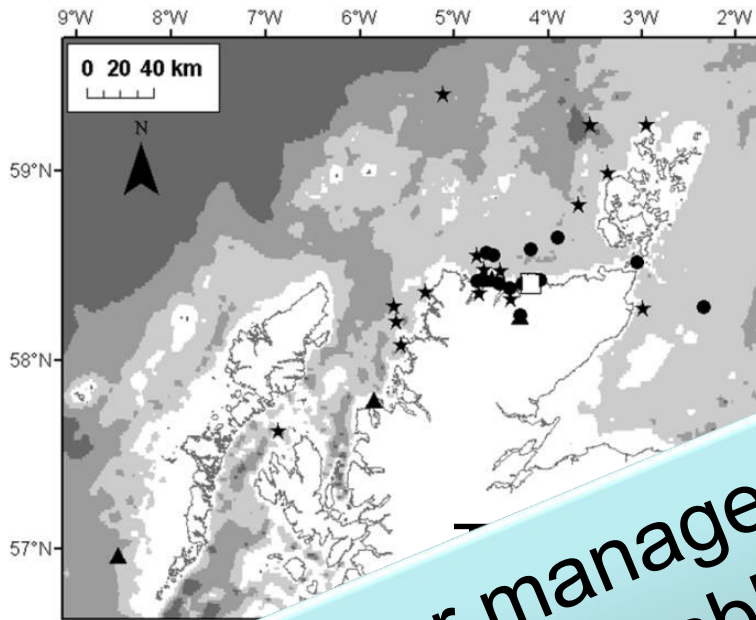


The Scottish Salmon

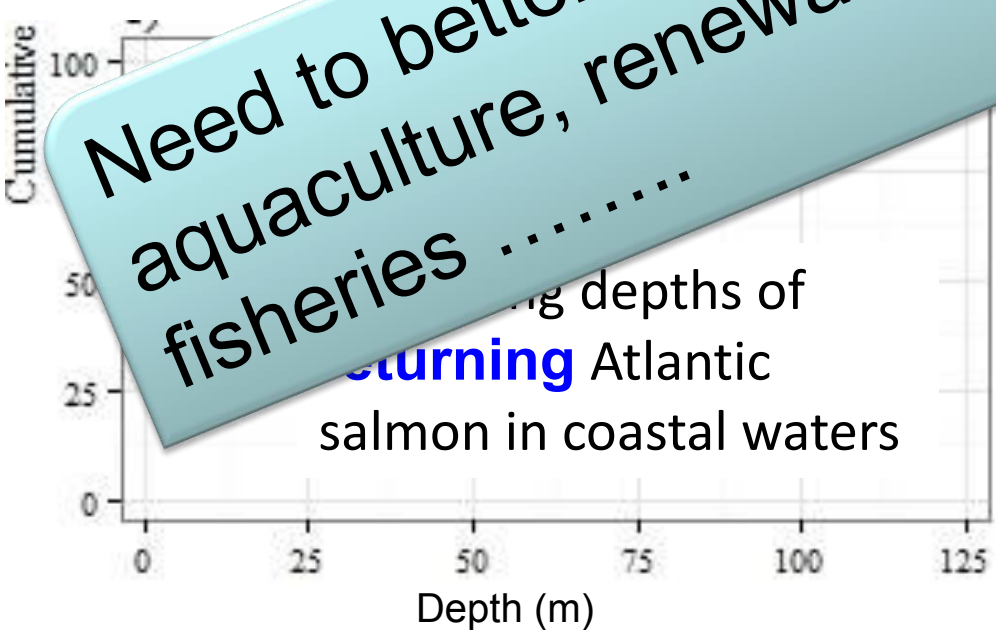
- Iconic species
- Born and early life in freshwater – migrates to salt water – **returns** to freshwater



Salmon in coastal waters



Need to better manage coastal human activities:
aquaculture, renewable energy, tourism, wild
fisheries



Genetic methods to assign returning salmon to regions/river catchments of origin

An Integrated System

Key Message

We live on 'planet water'. Our water resource is fundamental, is warming and our sea level is rising. We have a responsibility to understand the freshwater salt water links and to jointly manage the human activities which impinge on this fundamental resource.

