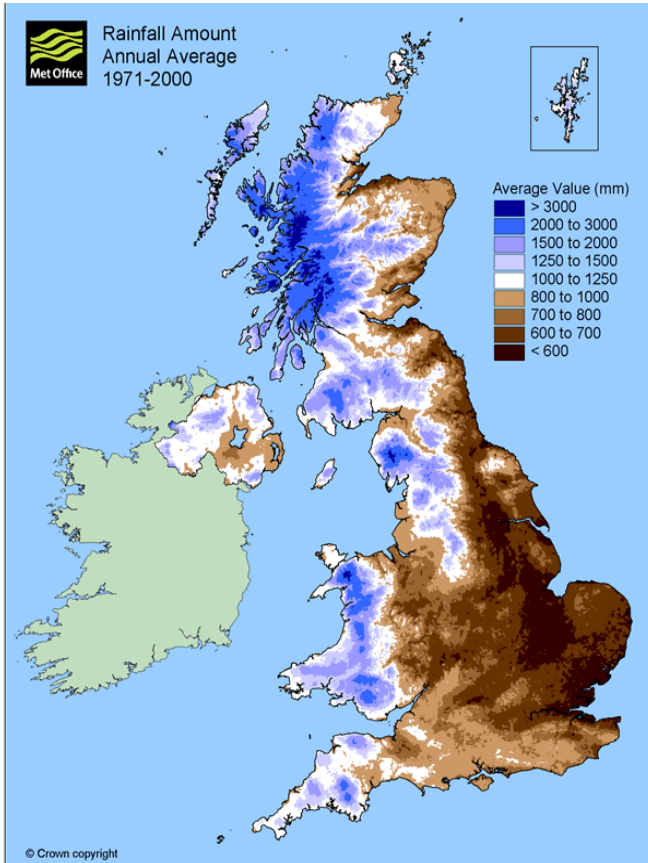


Habitat Restoration and Natural Flood Management

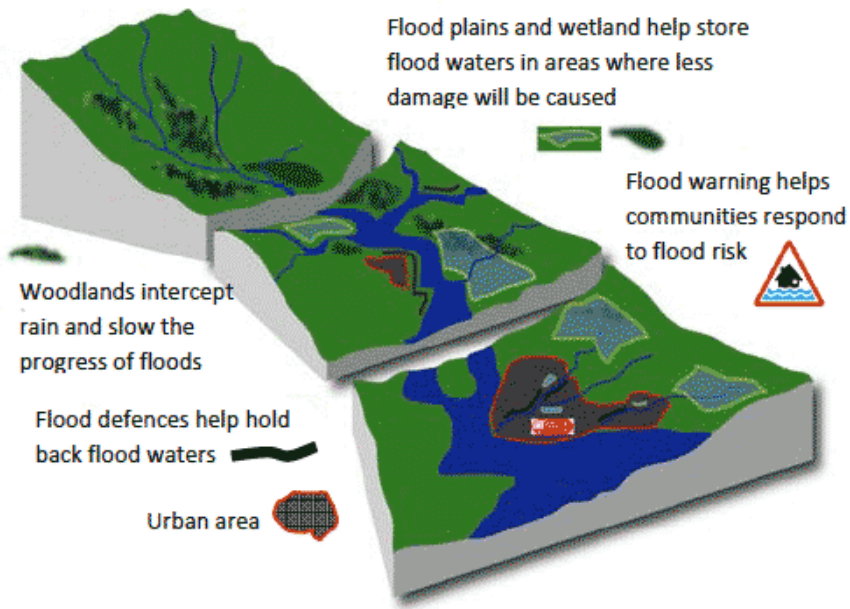
Dr Roy Richardson
River Basin Planning Manager
Scottish Environment Protection Agency

Scotland





Flood Risk Management Policies



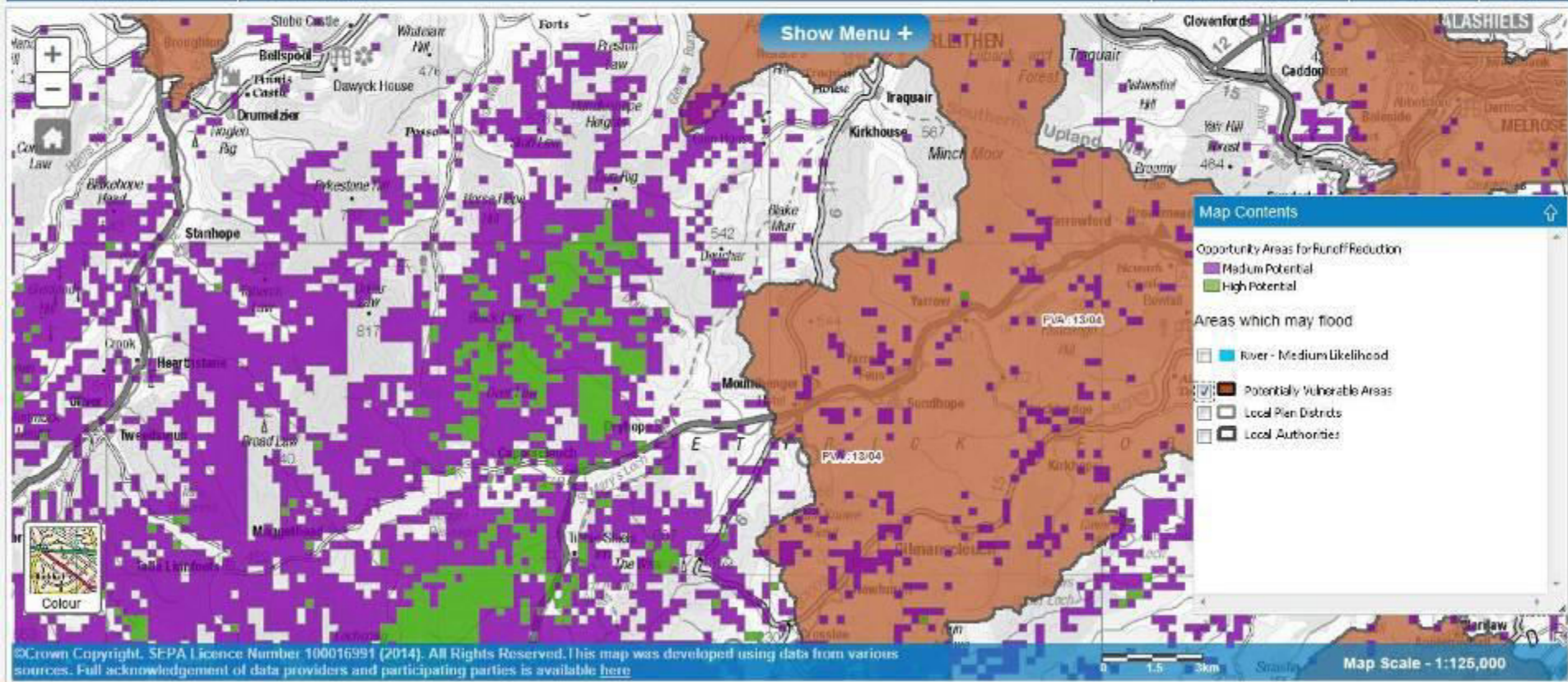
- plan-led
- risk-based
- integrated across all sources
- considers all actions
- collaboration between responsible authorities
- public engagement

FRM (Scotland) Act 2009

s20 – ‘SEPA must assess whether alteration or restoration of natural features and characteristics could contribute to the management of flood risk...’

‘include such features and characteristics which can assist in the retention of flood water, or in slowing the flow of water, those which contribute to the transporting and depositing of sediment, and the shape of rivers and coastal areas.’

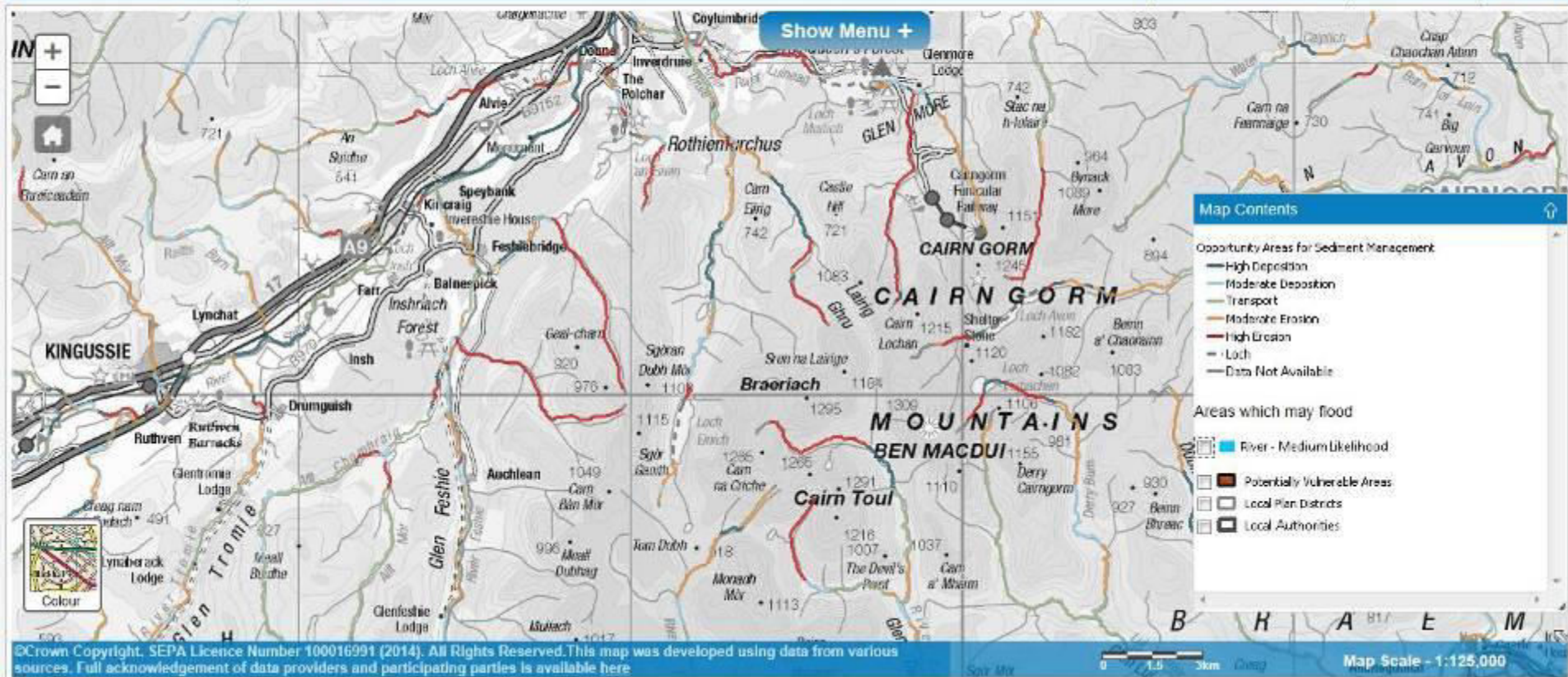
Runoff Reduction



Floodplain Storage



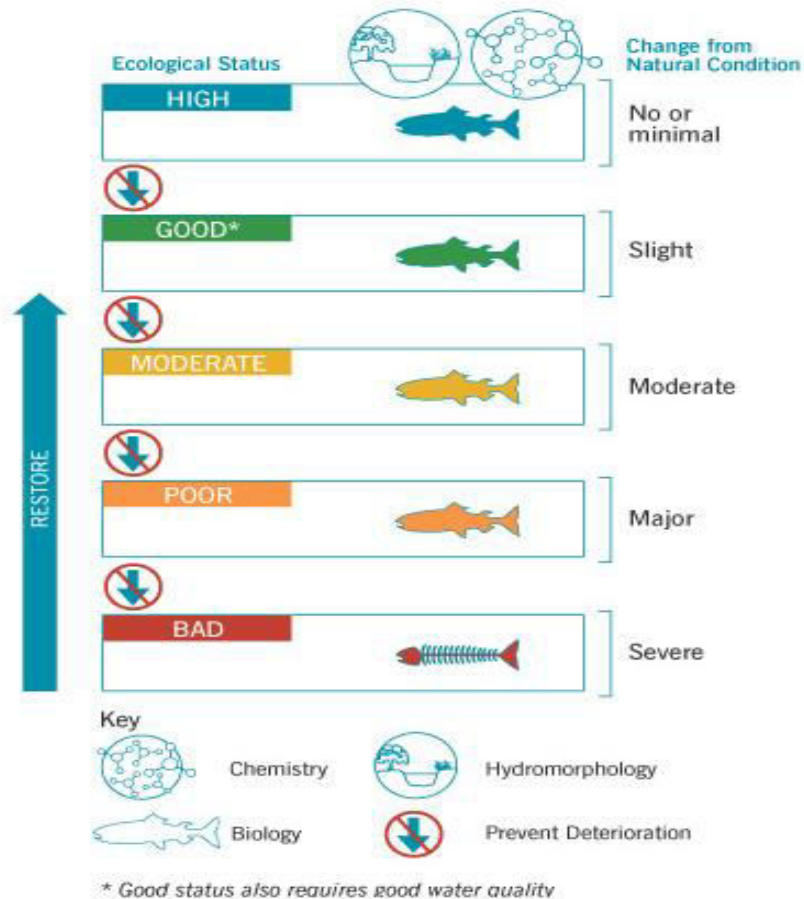
Sediment Management



Water Framework Directive

- Framework for management of water environment across Europe to:
 - protect, enhance and restore water bodies
 - reduce pollution
 - promote sustainable water use
 - contribute to mitigation of floods and droughts

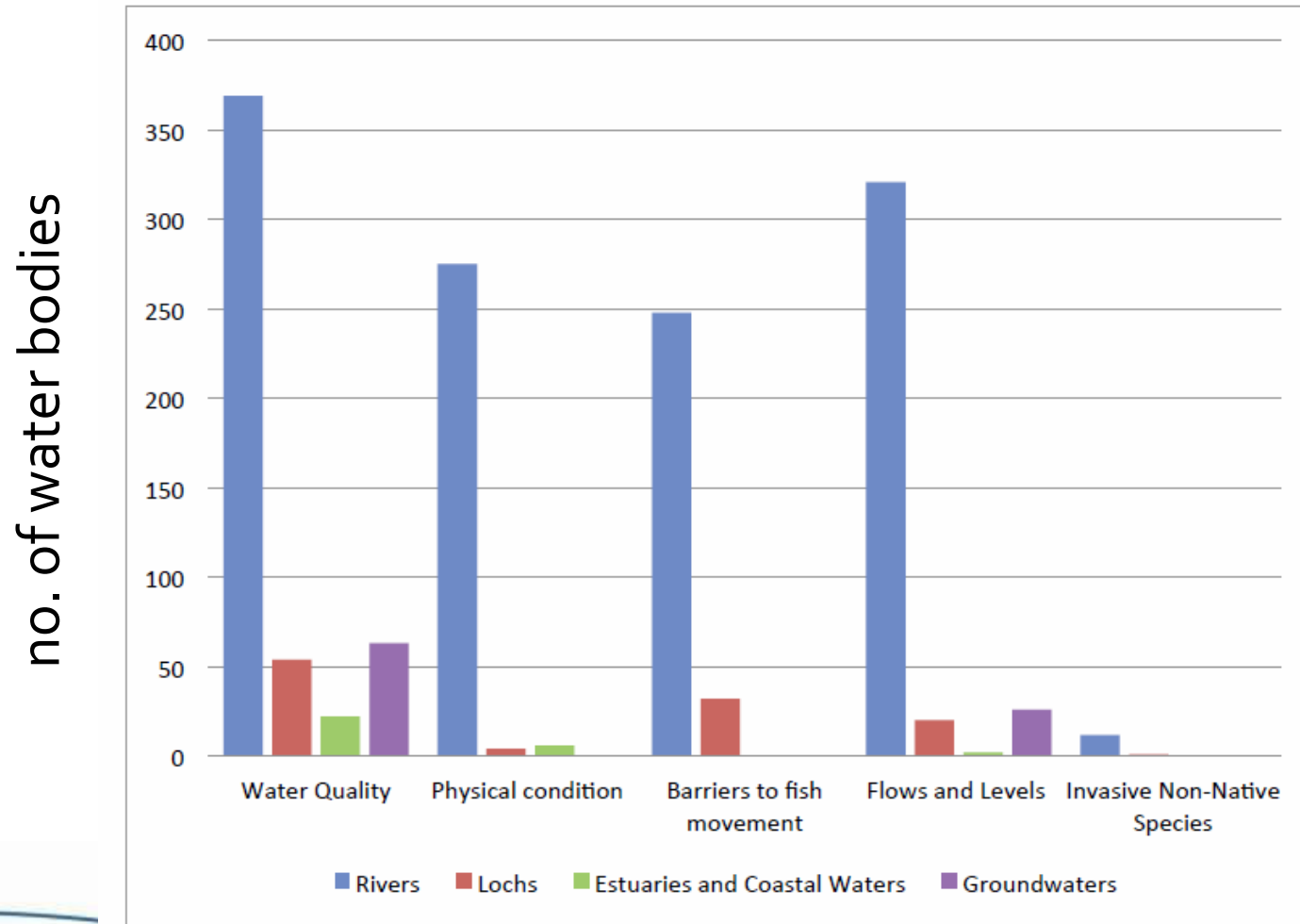
ecological status & objectives



Includes:

- Water Quality
- Physical Condition
- Fish Passage
- Flows and Levels
- Invasive Species

River Basin Management Planning

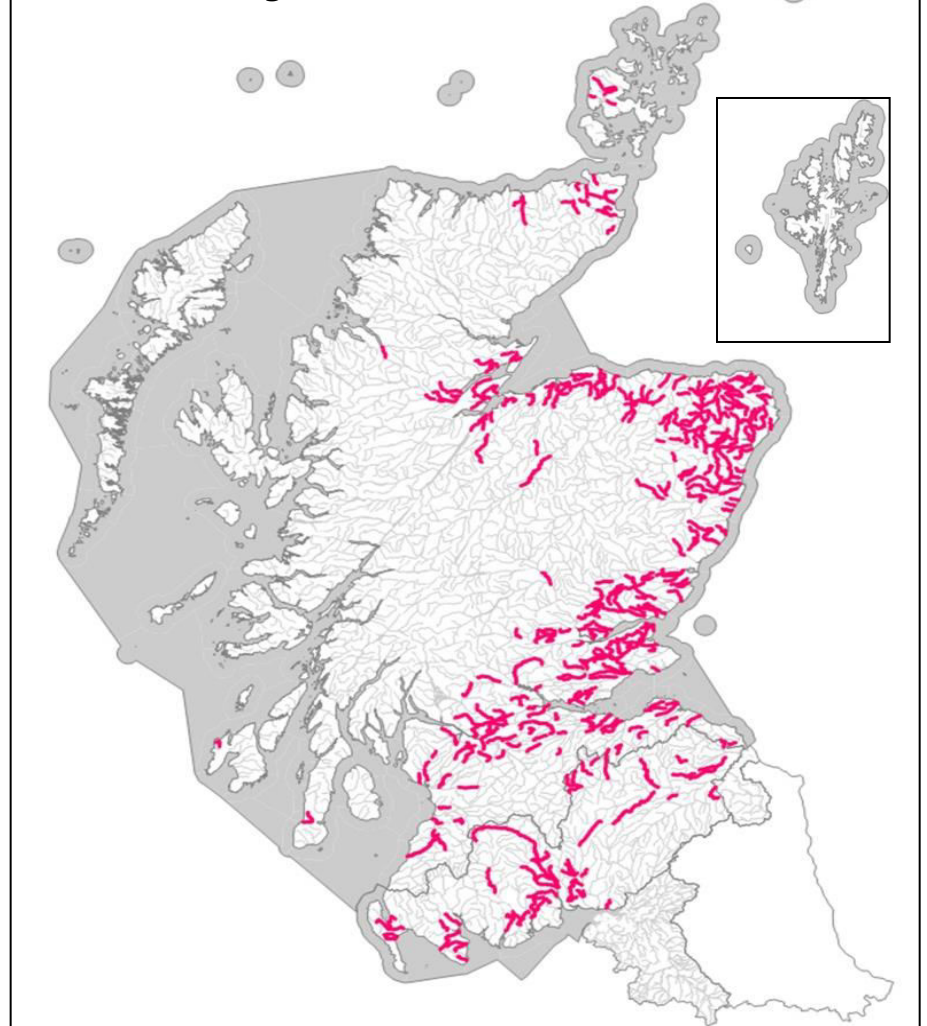




Potentially Vulnerable Areas



Rivers not in good condition



Eddleston Water



Eddleston Water

- The main aim is to investigate if changes to land use management and the restoration of natural habitats can help improve the river valley for wildlife and help to reduce the risk of flooding in Eddleston and Peebles
- Working with local communities and farmers to ensure the proposals deliver multiple benefits and meet their requirements....

Eddleston Water





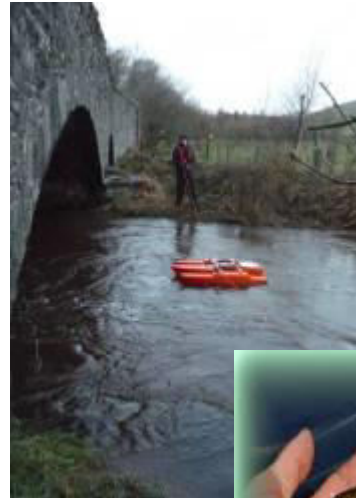
- 64 hectares of riparian woodland created
- 12,000 metres of fencing erected
- Over 1km of river re-meandered
- 22 'flow restrictors' installed
- 4200 square metres of ponds created, and
- over 67,000 trees planted

Comprehensive Monitoring Programme across whole catchment

Installed detailed baseline networks

Measuring:

- Precipitation and weather
- Flows and river Levels
- Groundwater
- Physical stream habitats and hydro-geomorphology
- Ecology – plants, fish, invertebrates



www.sepa.org.uk

